

# Welcome To Helmi House Extra Care Housing in Lambeth



**43 Robsart Street  
Stockwell, London  
SW9 0BQ**

**020 7326 3700**

**[www.sw9.org.uk](http://www.sw9.org.uk)**





# Introduction



Covering six floors, Helmi House consists of 46 flats of mainly one and two bedrooms.

The excellent facilities include a spacious communal lounge and garden, a hairdressing salon and a laundry.

The communal areas are wheelchair accessible and there are two lifts that serve all the floors in the building.

The weekly charges are as follows:

- **Rent: 1 Bedroom - £129.67**
- **Rent: 2 Bedrooms - £150.72**
- **Service Charge - £61.11**

Tenants will also be liable to pay Council Tax. Individual care charges may also apply.



Part of  
**Network  
Homes**



# More About Helmi House



The flats are wheelchair accessible and would suit those who are living independently for the first time. Our tenants can choose to receive all or part of their care from the care provider who is available on site, or make their own private arrangements.

## Services & Activities

Helmi House has an internal call system (pull chords and pendants) ensuring all our tenants can contact the care team in case of emergency.

Each week we host coffee mornings, bingo and quizzes and we also organise exciting trips out.



Part of  
**Network  
Homes**



# The Scheme

- Owned by Network Homes & managed by SW9 Community Housing
- A Designated Care Provider
- 46 self-contained one and two-bedroom flats over six floors
- A mixed population of older people, learning disabled adults and younger disabled
- An electric mobility store equipped for 11 buggies
- A 24-hour care and support team
- Two lifts servicing all six floors
- A communal garden
- A laundry
- A hairdressing salon
- A spacious communal area with access to computers, a television and coffee and tea facilities
- Guest accommodation with kitchen and own bathroom
- Private gardens for extra care
- CCTV throughout

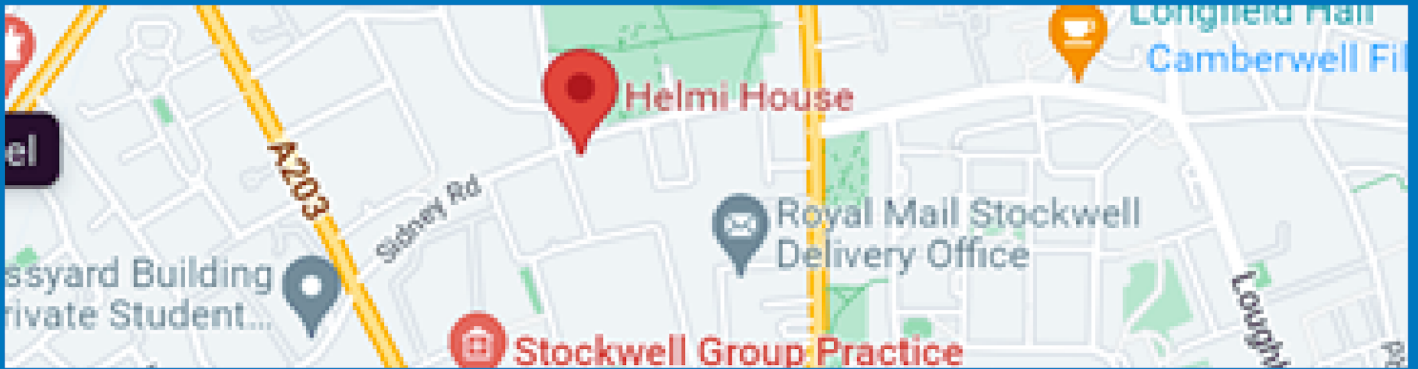


Part of  
**Network  
Homes**

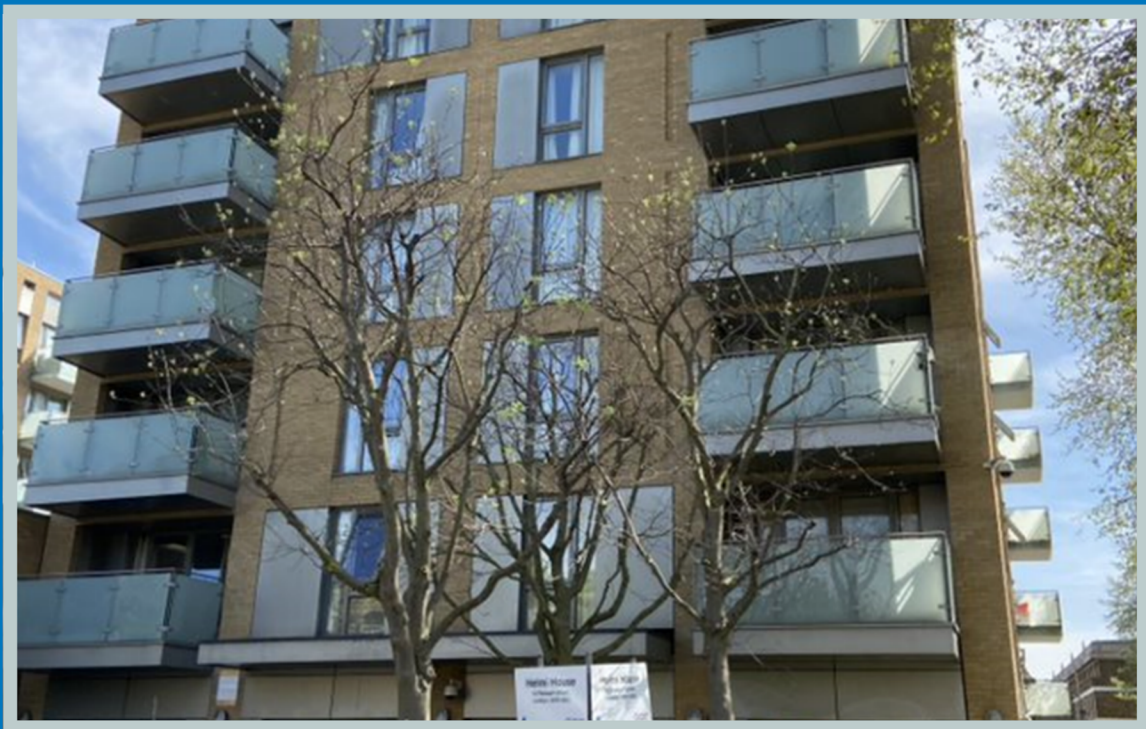




# Local Transport



Bus routes 2, 345, 333, 196 all pass by Robsart Street with links to both Brixton (Victoria Line) and Stockwell (Northern Line) tube stations. Brixton tube station has step-free access. Brixton mainline station (also nearby) does not have step-free access.



# What's In The Area?

Helmi House is located on the edge of Stockwell Park Estate and is within walking distance of Brixton with its famous market, a variety of shops and where a large range of ethnic foods are available including Afro-Caribbean.

There is a Post Office and a small parade of shops on Brixton Road, which is close by.

A doctor's surgery and chemist are a 5-minute walk away.

Brixton and Stockwell have good transport links to the City.

Brixton Recreation Centre houses a swimming pool and gym equipment, suitable for use by disabled people.

Slade Gardens Park lies opposite the Lidcote Place scheme, which is currently being developed with improved amenities for the local community.



Part of  
**Network  
Homes**

